

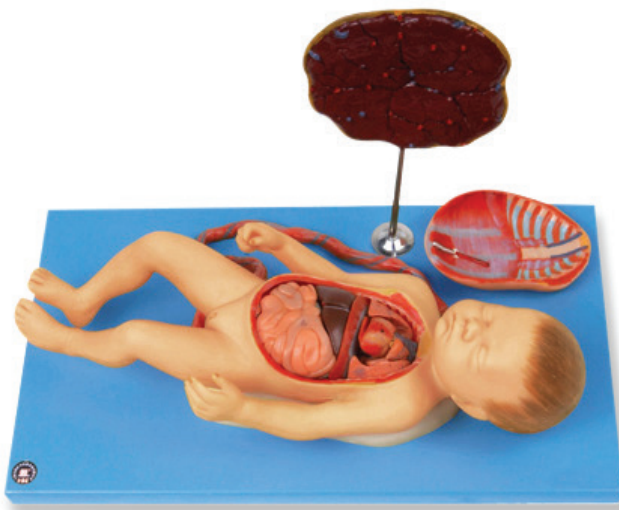
# MODELSCART

## Fetus with Viscera and Placenta

RX-42008

### Description

- Size: Life size • Made of PVC
- Dissectible in 11 parts
- Parts dissectible are: Liver in two parts, placenta with umbilical cord, left lung, right lung, two part heart, Thymus gland & intestinal viscera.
- Mounted on board size.



### PRODUCT RANGE

