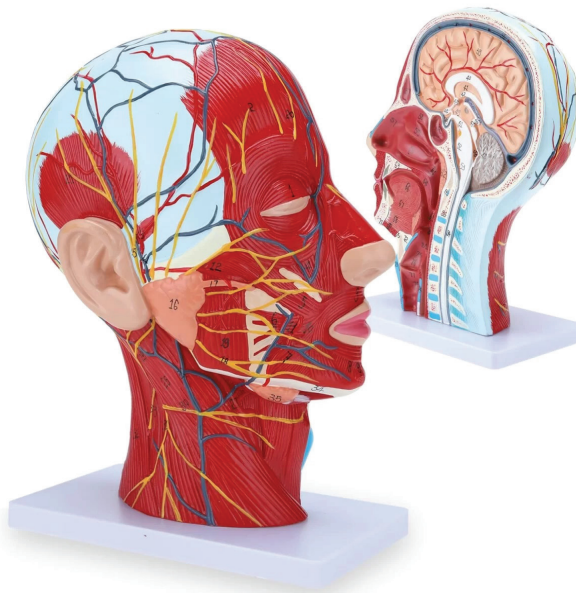


Half Head Anatomical Model

RX-A18210

Description

- Life size
- Made of PVC
- Model shows the right half of the adult human head and neck, sectioned along the sagittal plane.
- A superficial dissection exposes the facial muscles, the superficial blood vessels and nerve branches of the face and scalp, the parotid and submandibular glands
- A median dissection exposes the brain with its internal structure, the pharynx and upper respiratory tract, a section of the cervical vertebrae
- 81 features marked
- Feature card provided



PRODUCT RANGE

