

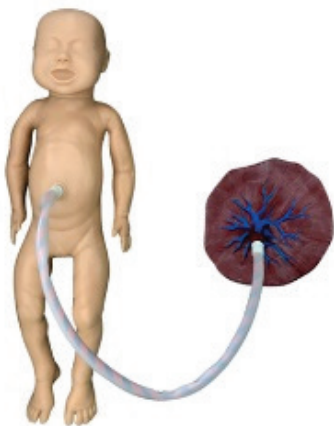
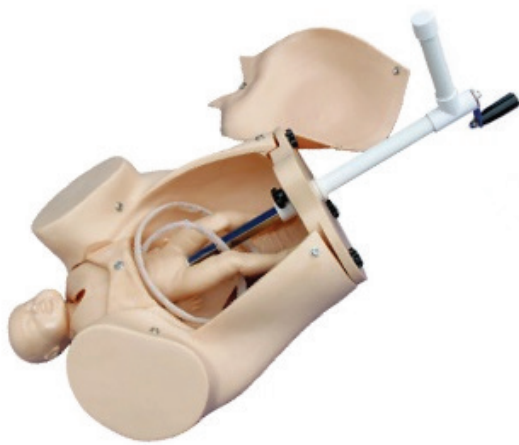
# MODELSCART

## Advanced Abdominal Palpitation and Delivery Mechanism

RX-F54

### Description

- Demonstrate the fetus, umbilical cord any placenta of vacuum-assisted delivery, flexible fetal joint ad multiple normal and abnormal positions of fetal delivery can be showed.
- Equipped with manual delivery mechanical parts; by manual the whole delivery process including engagement, descending, flexion, internal rotation, extension, restoration, external rotation and fetal delivery can be showed.
- Can practice and master the comprehensive skills of normal labor, abnormal labor (dystocia), midwifery and perineum protection.
- Equipped with soft elevated cushion for Leopold Maneuver practice.
- Equipped with models for cervical and vaginal examination practice before and a birth.
- Components: B (Fetus for Demonstration) + C (Matrix for Manual Delivery Demonstration) + D (Cervical Changes Models) + E (Lifting Soft Pad for Leopold Maneuver Practice).



### PRODUCT RANGE

