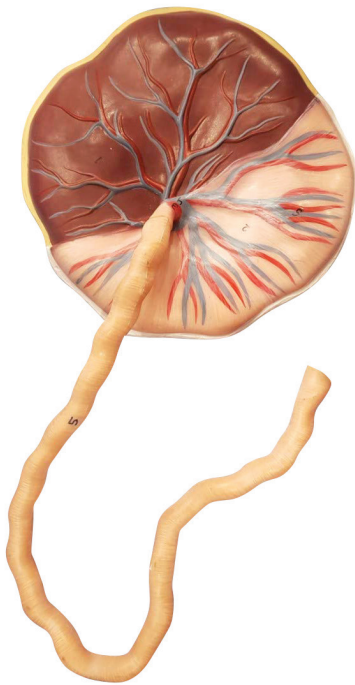


Human Placenta Model with Cord

XC-323

Description

- Size: Life size
- Made of PVC
- It shows structure of placenta from maternal & fetal side both.
- It also shows the relation between placenta and umbilical cord.
- Umbilical cord clearly shows umbilical vessels
- Dual Sided Detailing The fetal side of the model reveals the The removable umbilical cord clearly shows umbilical vessels (vein and arteries) surrounded by whartons jelly and encased in the amnion.
- Maternal side: shows dark maroon structure of the decidua featuring the cotyledons
- Fetal side: reveals the smooth shiny amnion (amniotic membrane) partially removed, exposing the intervillous space.



PRODUCT RANGE

