

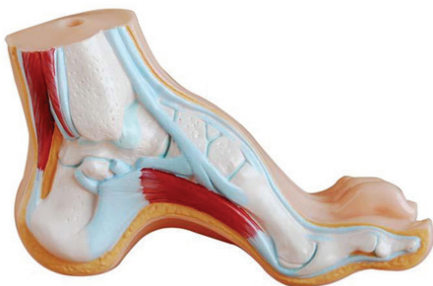
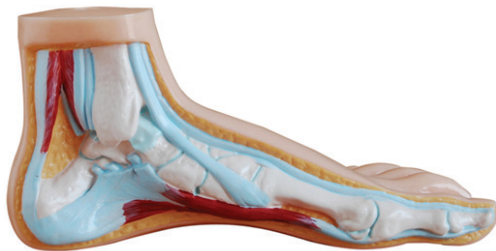
MODELSCART

Normal, Flat, Arched Foot Model

XC-326

Description

- This model shows the anatomical structure and the distal end of tibia of normal, flat and arched foot.
- Set of 3 models.



PRODUCT RANGE



Bones & Skeleton Models



Torso Models



Eye Models



Dental Models



Digestive System & Related Models



E.N.T Models



Respiratory System Models



Heart & Circulatory System



Brain, Nervous System & Related Models



Skin Models



Excretory System & Related Models



Reproductive System & Related Models



Gynae & Obstetric Models



Paediatrics Models



Nursing Manikins



CPR Training



Respiratory System Models