

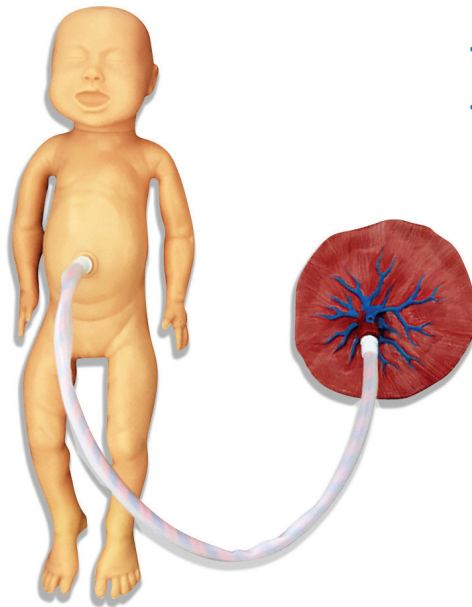
MODELSCART

New Born baby with Placenta

XC-409C

Description

- Female new-born systemic model, moveable head and limbs
- Realistic umbilical cord with umbilical vein and artery
- Umbilical cord ligation and nursing, realistic touch feeling, the enough
- Neonatal basic nursing: lactation, sponge washing, wearing clothes,changing diapers.



PRODUCT RANGE

